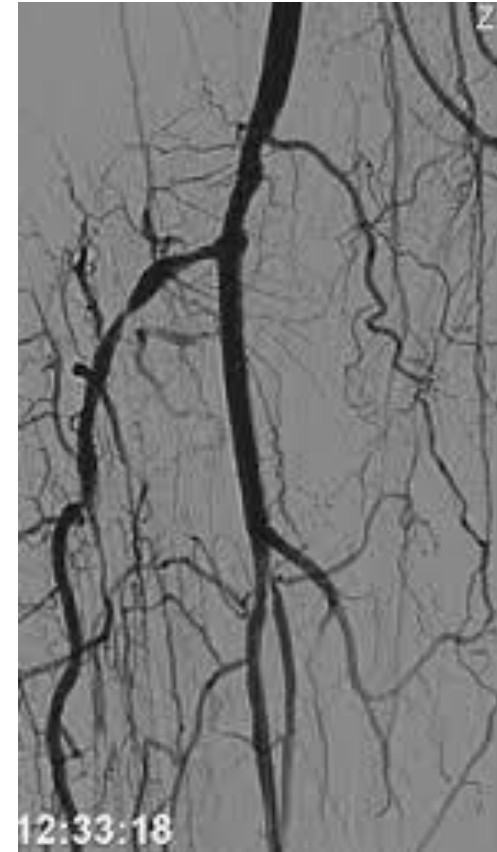


# Question 14

- This is an angiogram of a 65y man, a diabetic and tobacco user who has claudication at 100 feet, which has remained stable for 3y. Which of the following is incorrect with respect to his management plan:
  - A. Referral for risk factor modification and supervised exercise program
  - B. Given high risk of perforation during BTK intervention, endovascular revascularization is contraindicated
  - C. BTK interventions are indicated for CLI, rest pain, non-healing ulcer or wound or limb salvage
  - D. Long term patency of this lesion post-PTA is lower than that of iliac vessels



# Question 14

- This is an angiogram of a 65y man, a diabetic and tobacco user who has claudication at 100 feet, which has remained stable for 3y. Which of the following is incorrect with respect to his management plan:
  - A. Referral for risk factor modification and supervised exercise program
  - B. Given high risk of perforation during BTK intervention, endovascular revascularization is contraindicated
  - C. BTK interventions are indicated for CLI, rest pain, non-healing ulcer or wound or limb salvage
  - D. Long term patency of this lesion post-PTA is lower than that of iliac vessels

