

Question 27

Digital gangrene is not associated with which of the following conditions?

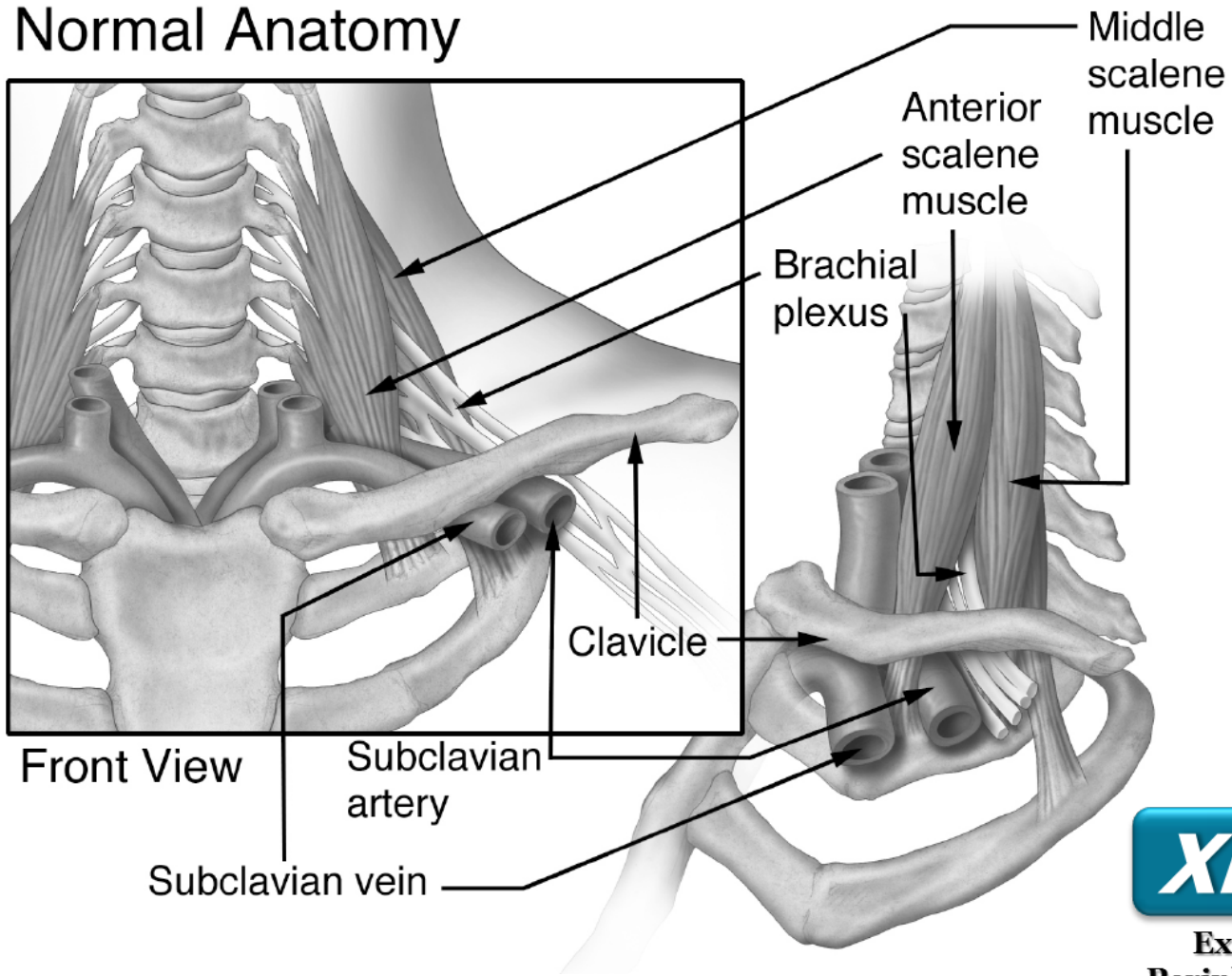
- a) Burger's disease
- b) Raynaud's disease
- c) Arterial thoracic outlet syndrome
- d) Padgett-schroetter disease

Question 27

Digital gangrene is not associated with which of the following conditions?

- a) Burger's disease
- b) Raynaud's disease
- c) Arterial thoracic outlet syndrome
- d) Padgett-schroetter disease

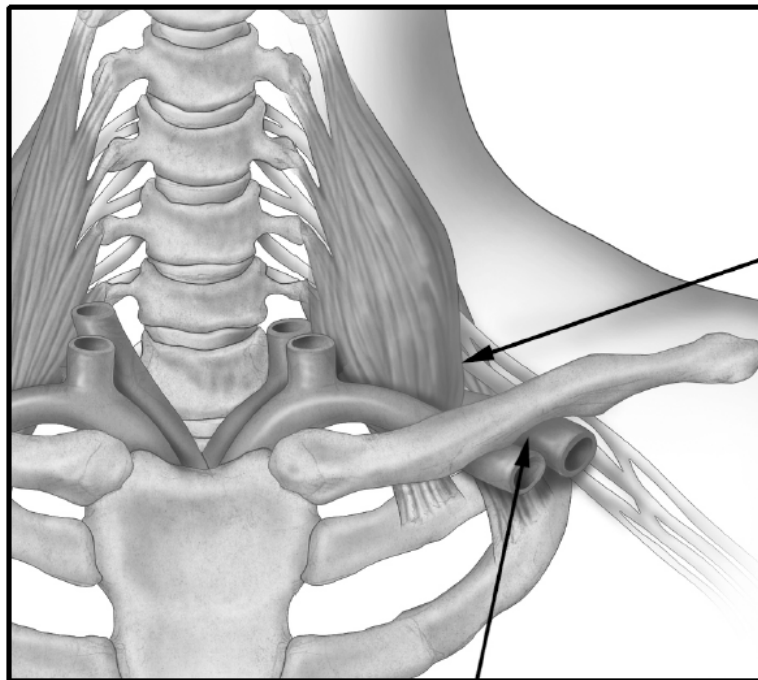
Thoracic Outlet Structures



Excellence in
Peripheral Arterial
Disease

Thoracic Outlet Structures

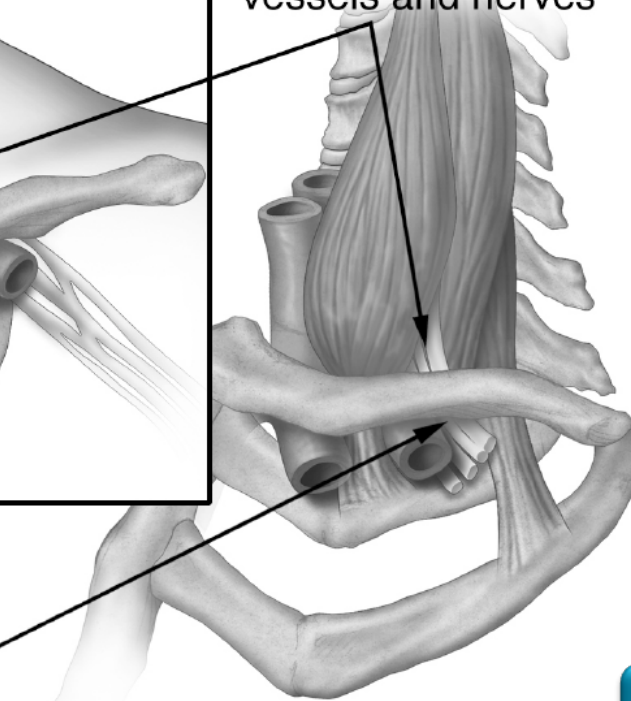
Thoracic Outlet Syndrome



Front View

Nerves and vessels
compressed between
the clavicle and first rib

Hypertrophied scalene
muscles compress the
vessels and nerves



Side View



Excellence in
Peripheral Arterial
Disease